

The modern Starr floorplan boasts approximately 2,500 square feet, 2-4 bedrooms, 2.5-3.5 baths, two car attached garage, and a spacious rooftop deck perfect for entertaining all within the newest phase of Ellis Preserve. The entry level offers maximum customization with a flex space which can fit your needs—a bedroom, study and second living room are just some of the possibilities. The wide open living level will welcome you with 10 ft. high ceilings and is centered by a 10 ft. kitchen island which separates the spacious dining and family room. When you head to the third level, you will be greeted by a luxury owner's suite with a private luxury bathroom and two additional bedrooms with a hall bath. Get ready to enjoy your backyard in the sky. The nearly 700 square foot rooftop terrace has endless potential and is ideal for a summer cookout in your outdoor kitchen, or quality time under the pergola on a beautiful day. Live the life at The Towns at Newtown Walk.

THE STARR

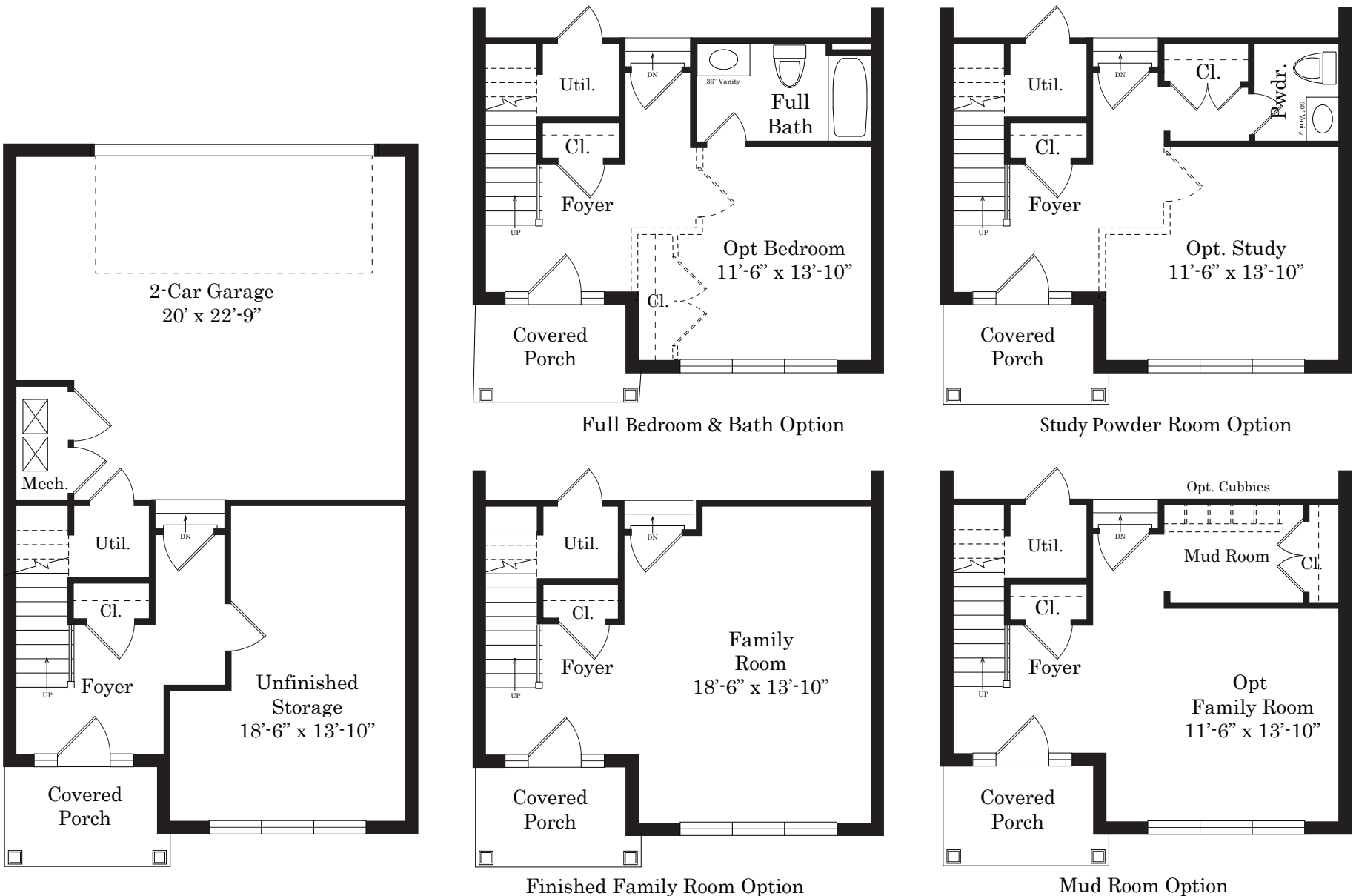
TRADITIONAL STYLE EXTERIOR



AT Ellis Preserve
NEWTOWN WALK

THE TOWNS

The Starr

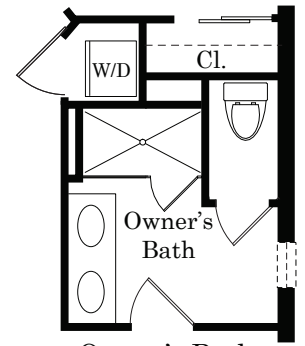
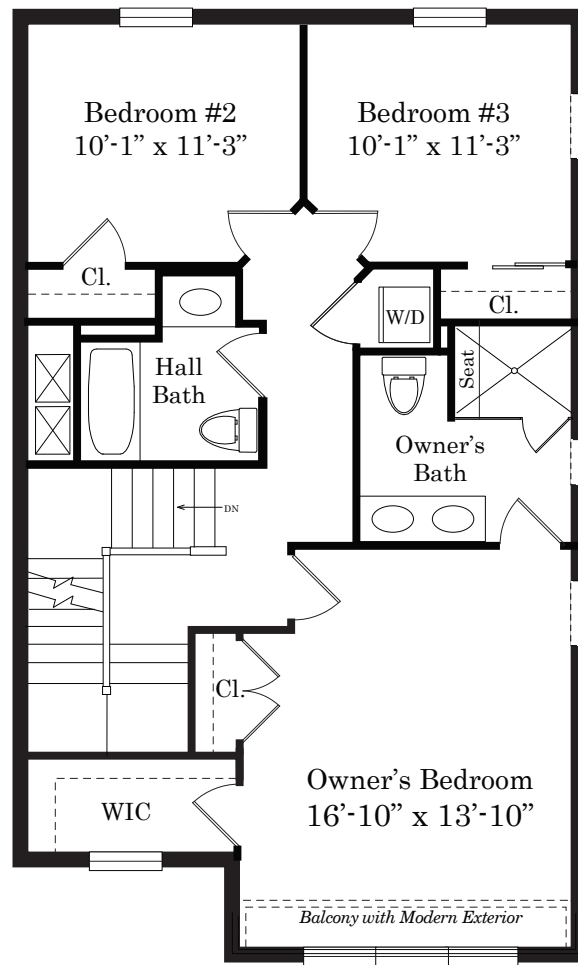


Entry Level

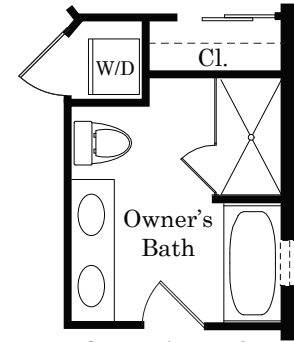
RockwellCustom.com
 484.237.4040



The Starr

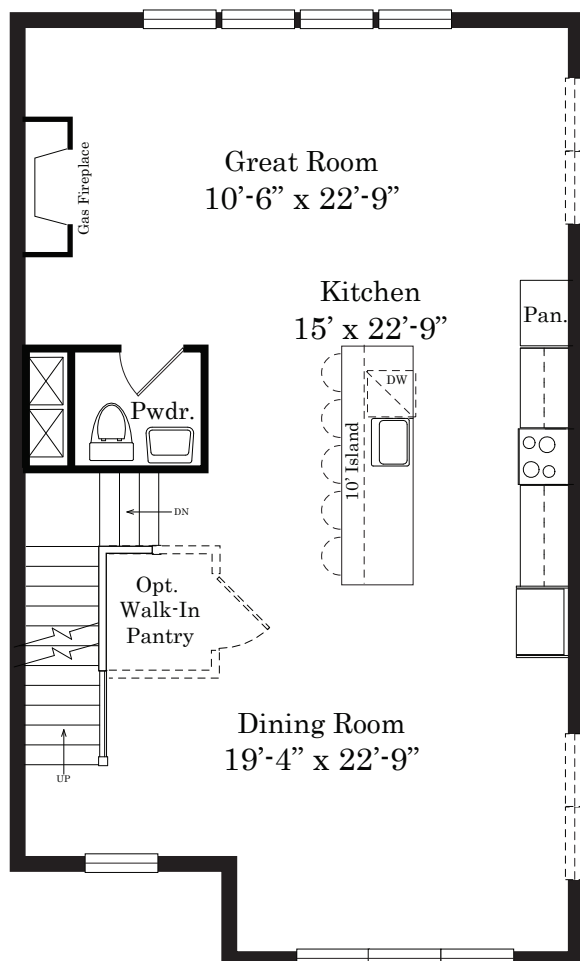


Owner's Bath
Water Closet Option

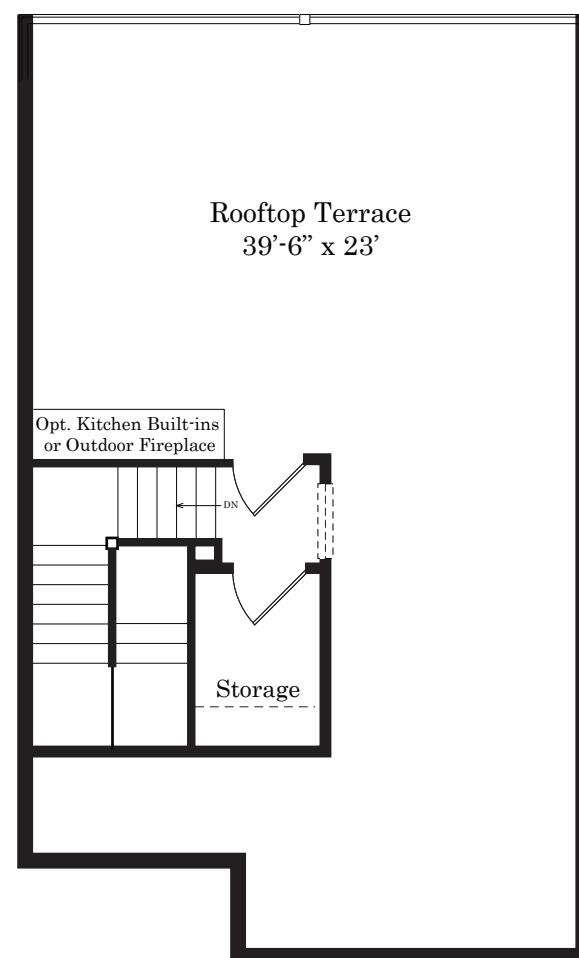


Owner's Bath
with Tub Option

Bedroom Level



Living Level



Rooftop Terrace

*Side windows included with end home



Although all illustrations and specifications are believed correct at the time of publication, accuracy cannot be guaranteed. The right is reserved to make changes, without notice or obligation. Windows, doors, ceilings and room sizes may vary depending on the options and elevations selected. Optional items are available at additional cost. Actual square footage will vary based on floor plan configuration and options selection. This brochure is for illustrative purposes only and not part of a legal contract.