



Homesite 2 Look Book

Uniquely Designed for You

This look book is for illustrative and marketing purposes only. Dimensions, images and renderings subject to change.



2.7.23

Homesite 2 | Kitchen



Moen Sleek Chrome Kitchen Faucet



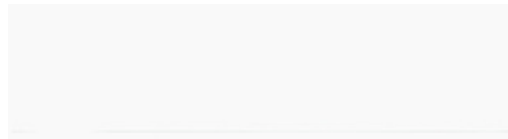
Stainless Steel Undermount Sink



Mission White Kitchen Cabinetry



LVP Polaris Plus;
Castaway



Backsplash Tile
Craft II 3x12 White Glossy
50% offset

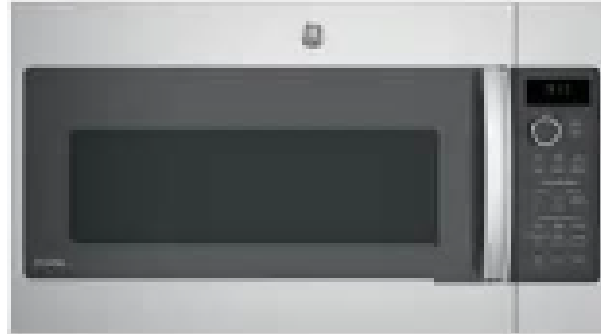


Calacatta Vicenza Quartz Kitchen Countertop

Homesite 2 | Kitchen Appliances



Summit 12"
Smoothtop Electric Cooktop 2 Burner



30" GE Profile
Over The Range Convection Microwave



18" GE Profile Built In Dishwasher

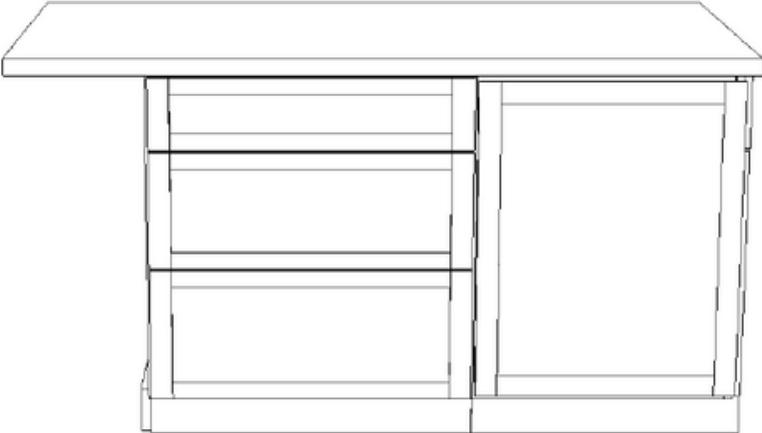
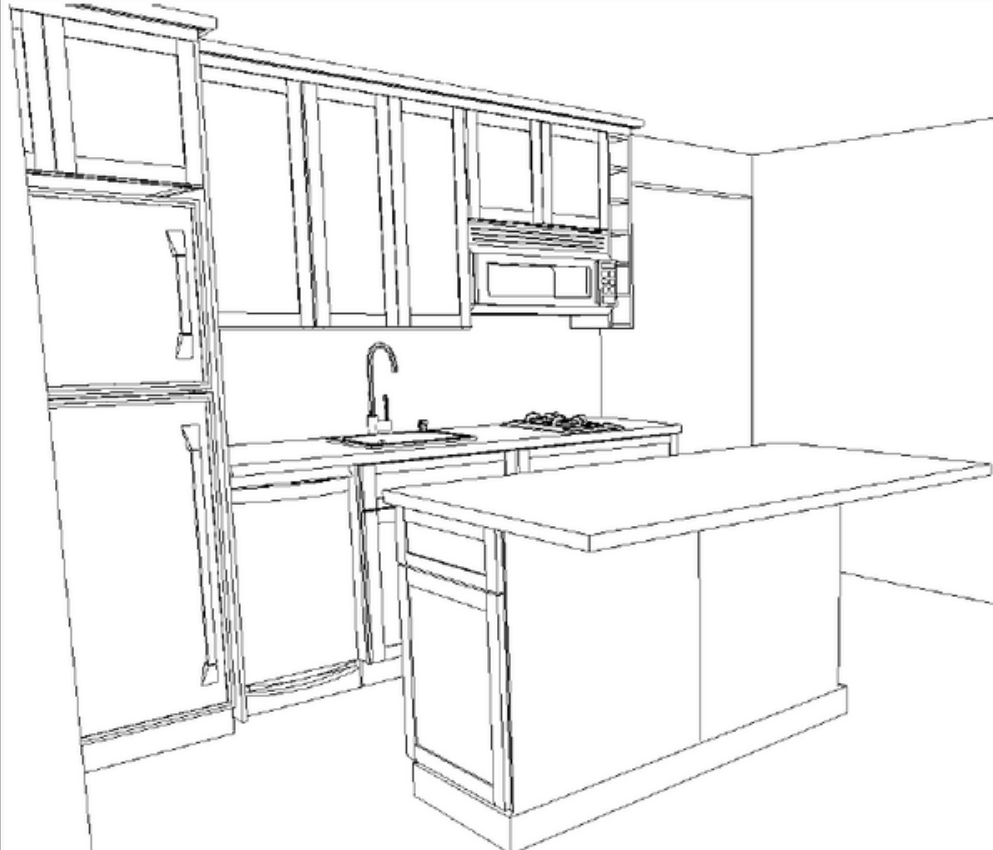


30" GE Counter Depth
Refrigerator



24" GE Washer/Electric Dryer

Homesite 2 | Kitchen Layout



Homesite 2 | Bathroom



Gibson Chrome 4" centerset faucets

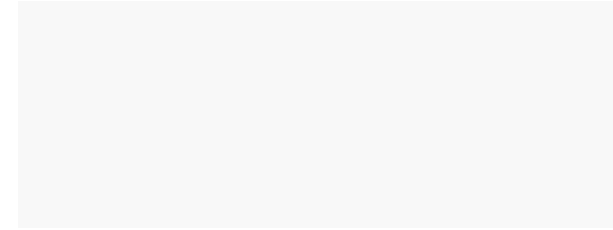
Gibson Chrome Fixtures



Chrome Bath Accessories



Mission Gray Vanity



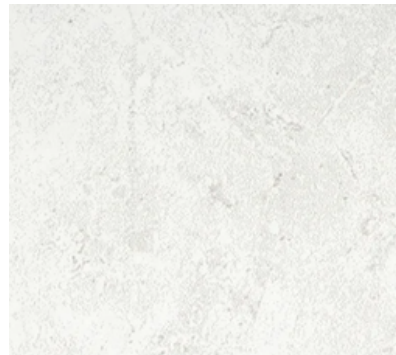
Arctic White Quartz Countertop with white rectangle sink



Vanity Light



Sterling Elongated Comfort Height White Toilet



Realm II Assembly 13x13 Floor Tile Set Straight



Realm II Assembly 13x13 Shower Wall Tile Set on Diagonal

Homesite 2 | Other Features



Bath Framed Chrome Shower Door
Style may vary depending upon availability



2 Panel Square Interior Doors



Cove Nickel Knobs

Craftsman Trim



**LVP Polaris Plus;
Castaway**
Main Living Area & Hall, Laundry,
Bedroom, Office

Homesite 2 | Floorplan