



Homesite 1 Look Book

Uniquely Designed for You

This look book is for illustrative and marketing purposes only. Dimensions, images and renderings subject to change.



2.7.23

Homesite 1 | Kitchen



Moen Sleek Chrome Kitchen Faucet



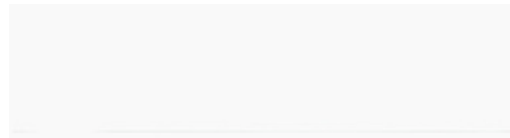
Stainless Steel Undermount Sink



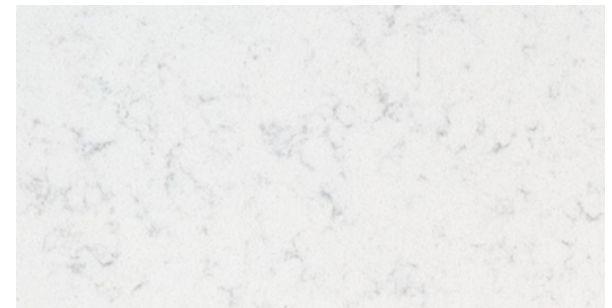
Mission White Kitchen Cabinetry



LVP Polaris Plus;
Castaway



Backsplash Tile
Craft II 3x12 White Glossy
50% offset

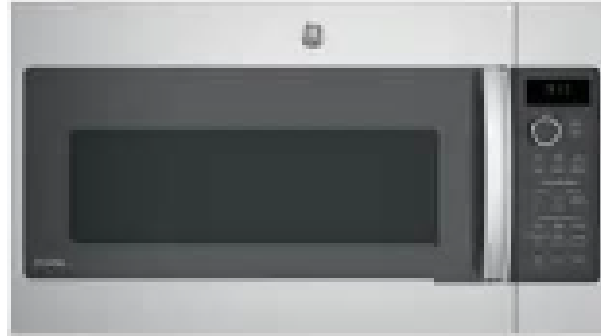


Calacatta Vicenza Quartz Kitchen Countertop

Homesite 1 | Kitchen Appliances



Summit 12"
Smoothtop Electric Cooktop 2 Burner



30" GE Profile
Over The Range Convection Microwave



18" GE Profile Built In Dishwasher

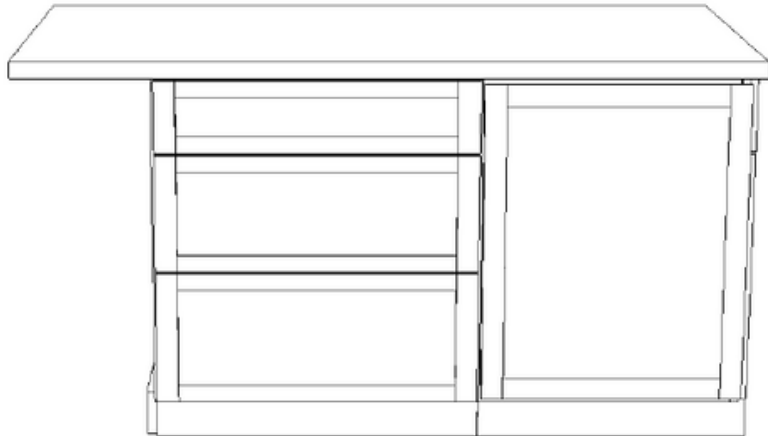
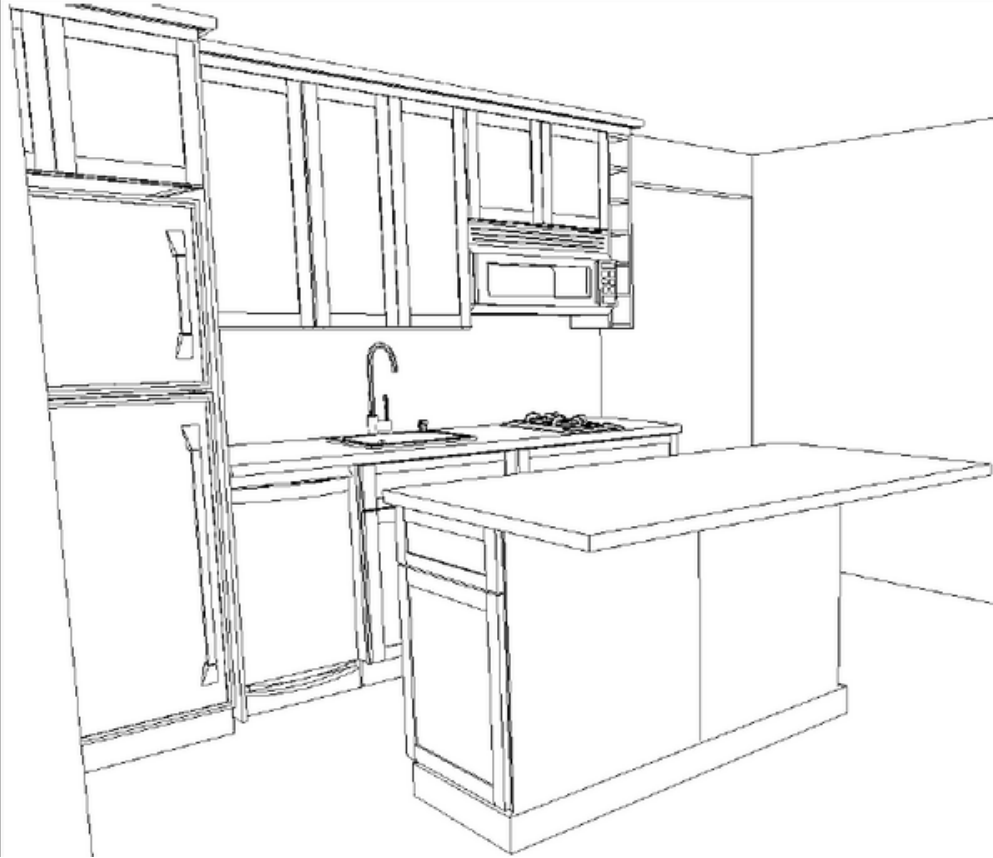


30" GE Counter Depth
Refrigerator



24" GE Washer/Electric Dryer

Homesite 1 | Kitchen Layout



Homesite 1 | Bathroom



Gibson Chrome Fixtures



Gibson Chrome 4" centerset faucets



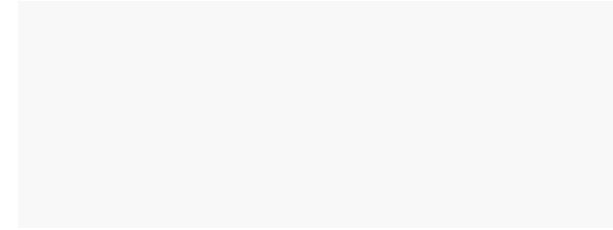
Chrome Bath Accessories



Sterling Elongated
Comfort Height White Toilet



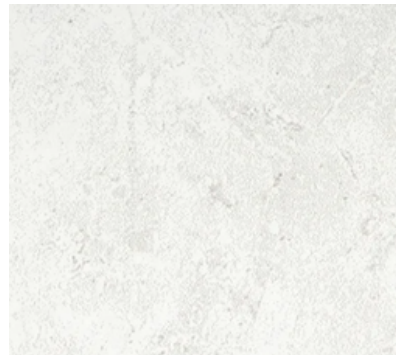
Mission Gray Vanity



Arctic White Quartz Countertop with
white rectangle sink



Vanity Light



Realm II Assembly 13x13
Floor Tile Set Straight



Realm II Assembly 13x13
Shower Wall Tile Set on Diagonal

Homesite 1 | Other Features



Bath Framed Chrome Shower Door
Style may vary depending upon availability



2 Panel Square Interior Doors



Cove Nickel Knobs

Craftsman Trim Throughout



**LVP Polaris Plus;
Castaway**
Main Living Area & Hall, Laundry,
Bedroom, Office

Homesite 1 | Floorplan