

Carriages at  
**VENTRY**  
◇ EDMONT PRESERVE ◇

**THE ASHBURN**

INTERIOR HOME WITH FIRST FLOOR MASTER



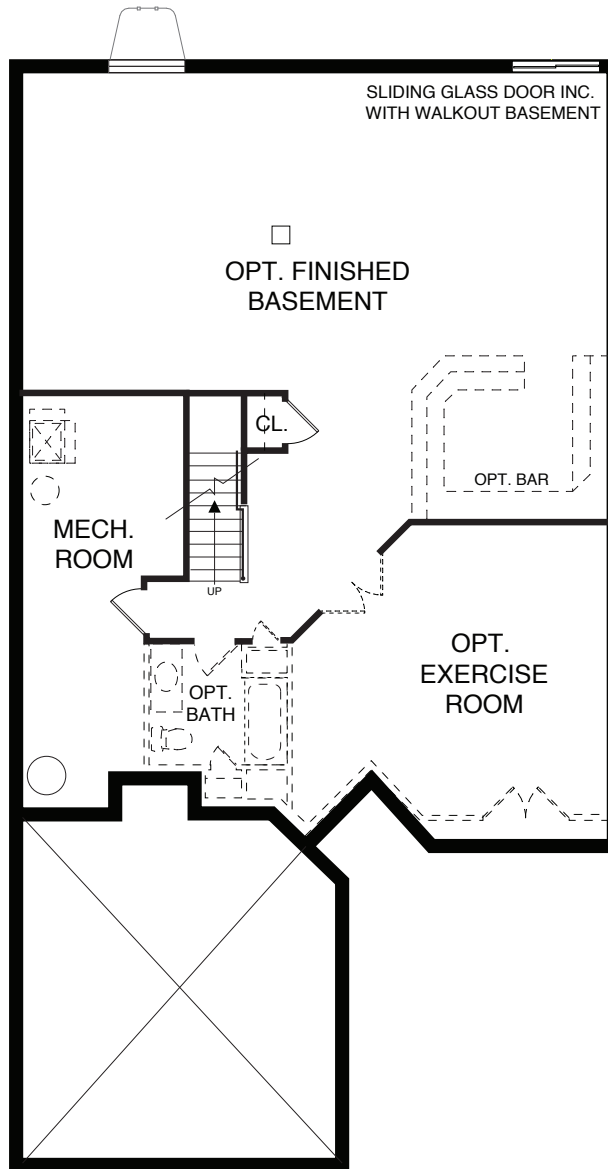
MODERN FARMHOUSE



CRAFTSMAN

**The Ashburn** ranges from 2,670 up to 4,280 finished square feet. Comfort and convenience is behind this lovely interior home floor plan. The large open kitchen, dining area and family room will create just the perfect setting for enjoying the family or entertaining friends. The beautiful first floor owners' suite with lavish master bath is the perfect retreat! A private study and spacious mud room complete the first floor. Upstairs, two additional bedrooms—sharing a hall bath and a loft overlooking the family room make this home truly spectacular. The full basement coupled with the two-car garage will provide you with plenty of storage room.

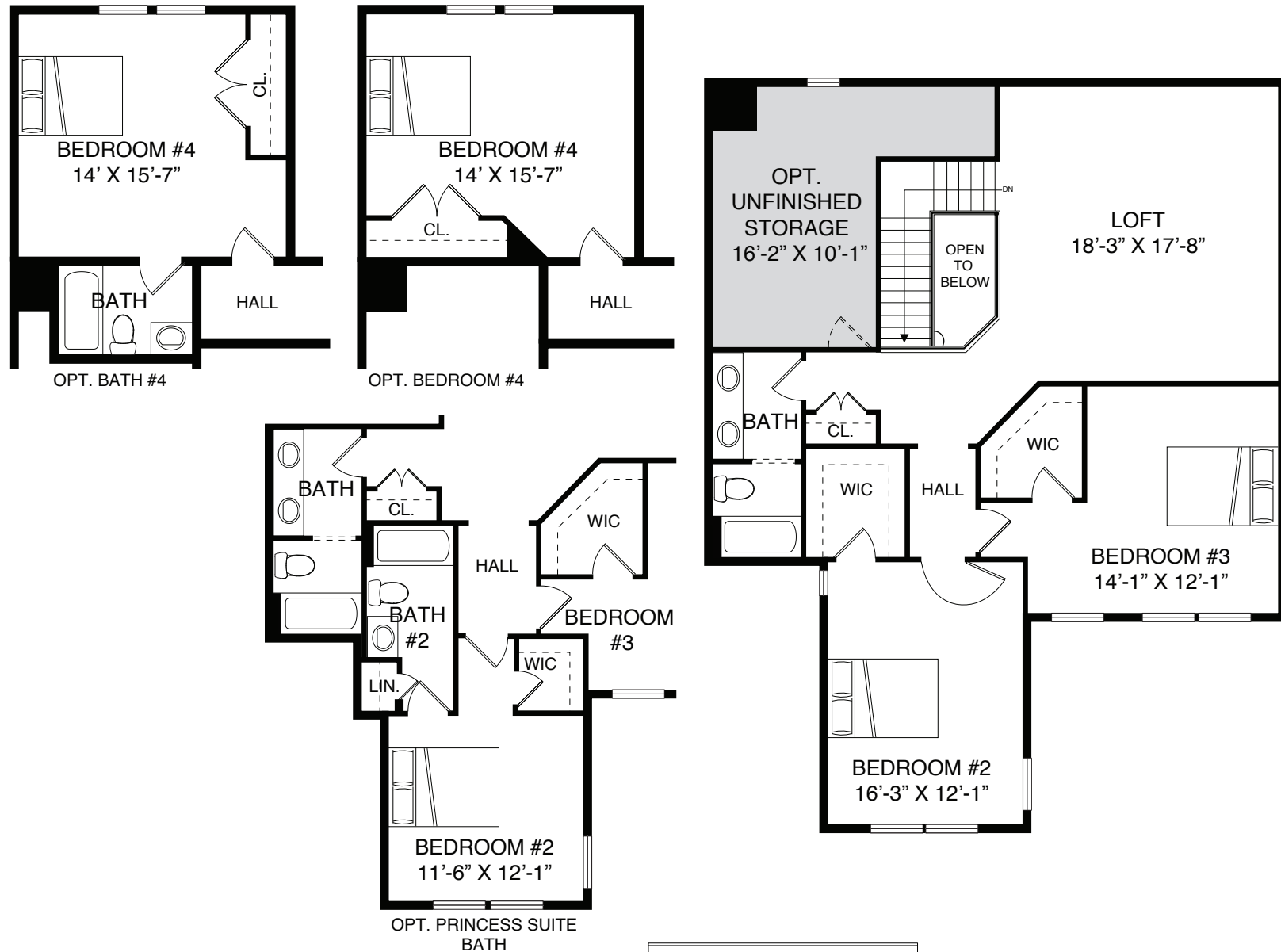
## Ashburn Basement Level

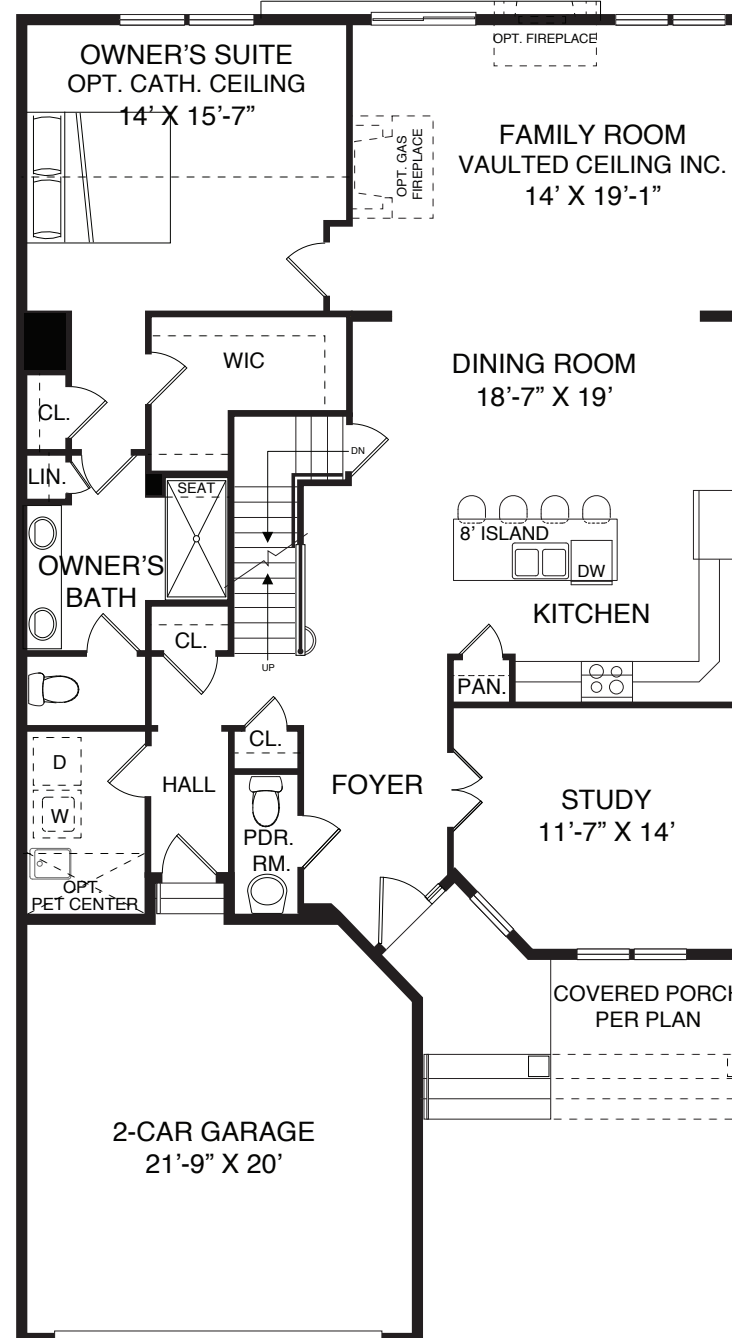


**VENTRY**  
◇ EDMONT PRESERVE ◇

**Luxury Carriage Homes**  
**Located in Edmont, PA**  
**RockwellCustom.com**  
**484.240.4040**

## Ashburn Interior Home





Although all illustrations and specifications are believed correct at the time of publication, accuracy cannot be guaranteed. The right is reserved to make changes, without notice or obligation. Windows, doors, ceilings and room sizes may vary depending on the options and elevations selected. Optional items are available at additional cost. Actual square footage will vary based on floor plan configuration and options selection. This brochure is for illustrative purposes only and not part of a legal contract.