

Carriages at  
**VENTRY**  
◇ EDMONT PRESERVE ◇

**THE HALLIDAY**  
INTERIOR HOME



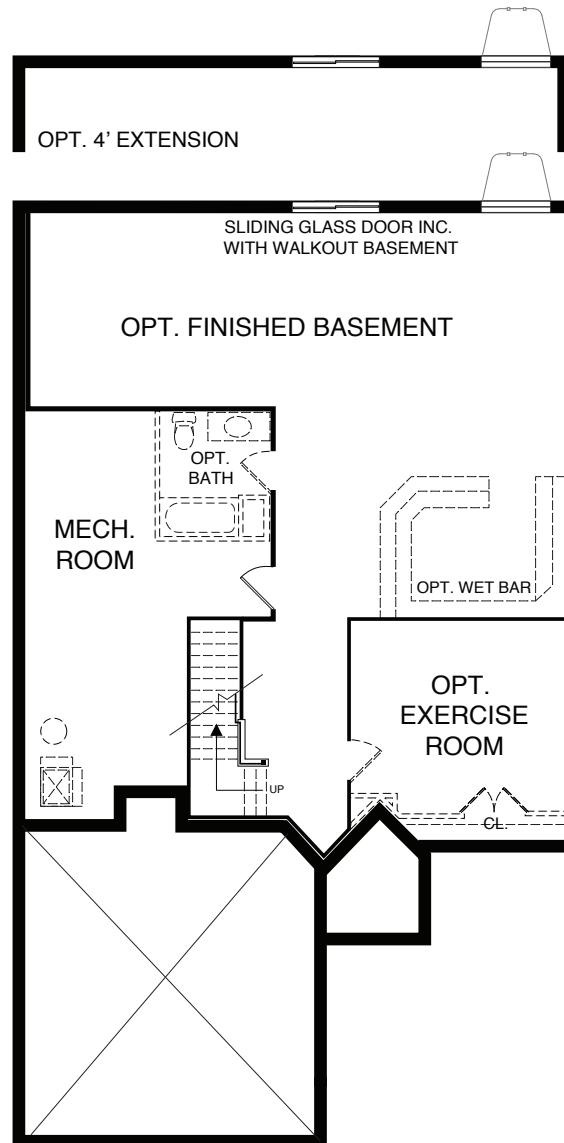
CRAFTSMAN



MODERN FARMHOUSE

**The Halliday** ranges from 2,845 up to 4,460 finished square feet. Step into true luxury! This lovely interior home features an open, airy floor plan perfect for enjoying time with the family as well as entertaining friends. The first floor's stunning kitchen/breakfast area which opens to a magnificent family room with vaulted ceiling is just the beginning. Upstairs you'll find a magnificent owner's suite with sumptuous master bath, two additional bedrooms, hall bath and convenient laundry room. The full basement with 9' ceilings and a two-car garage will provide plenty of storage.

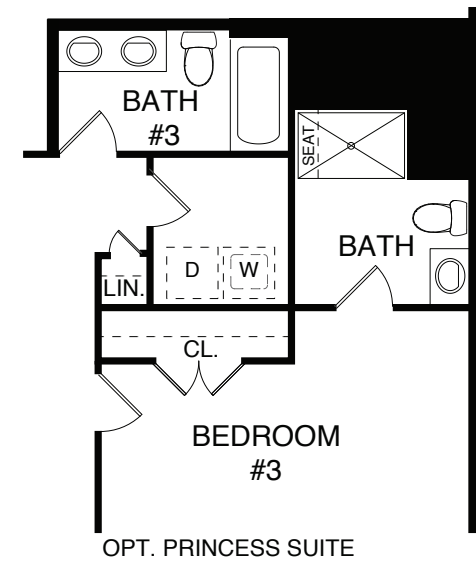
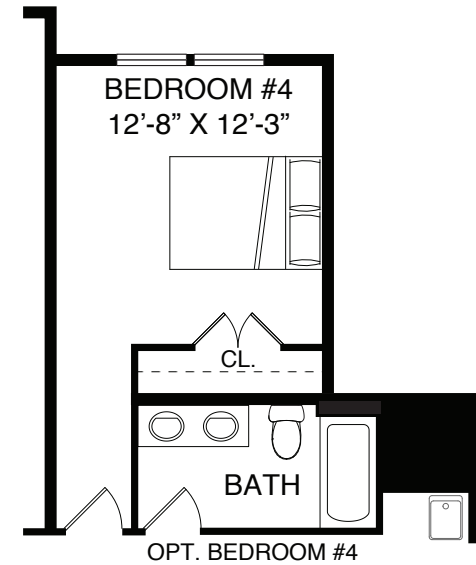
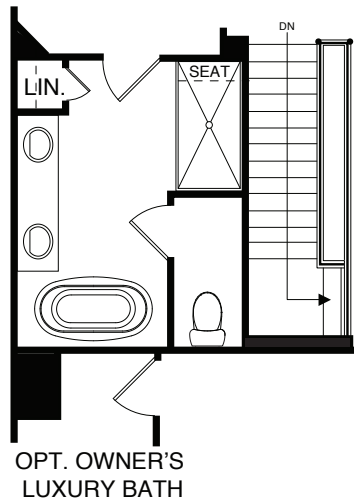
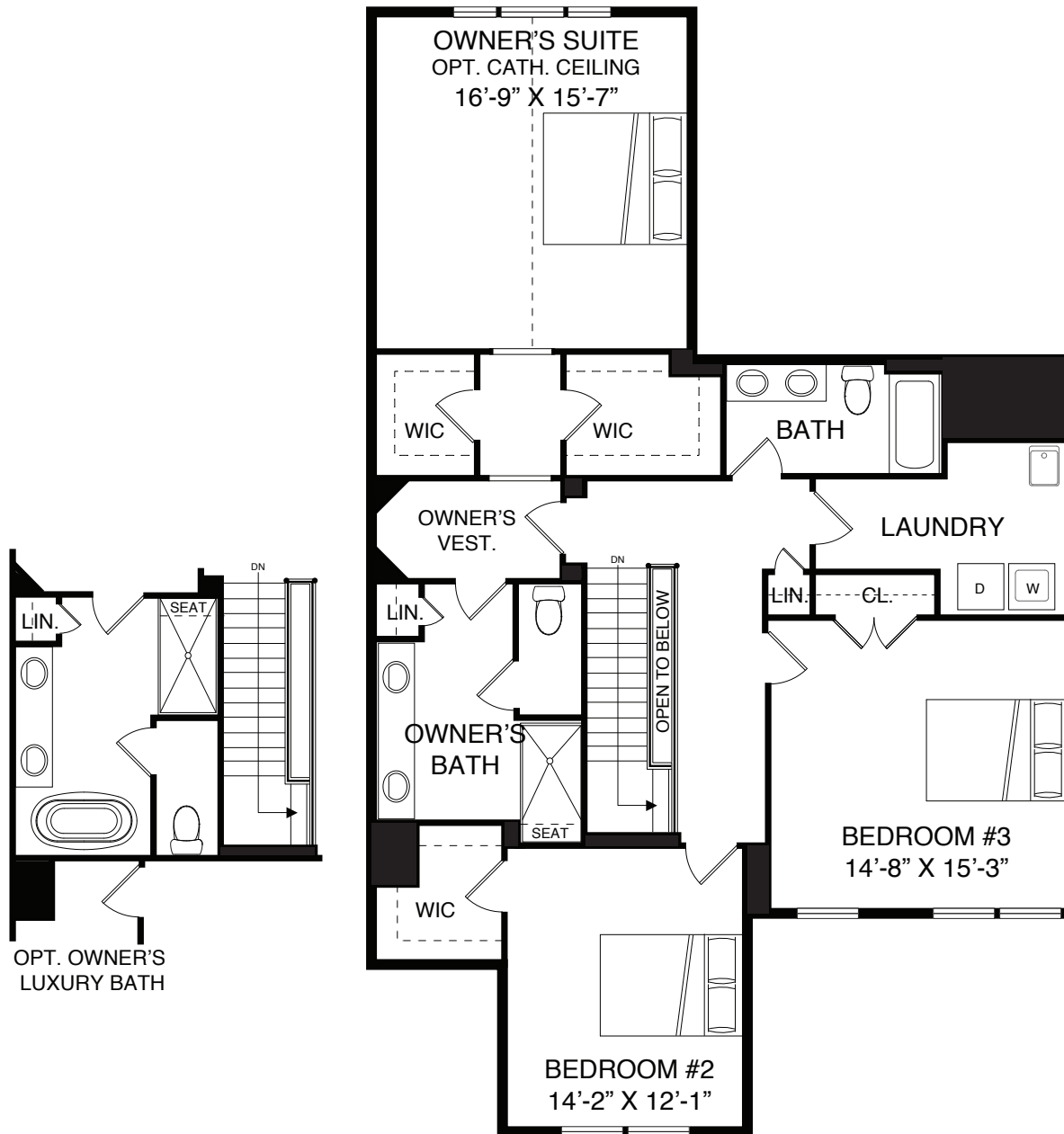
## Halliday Basement Level

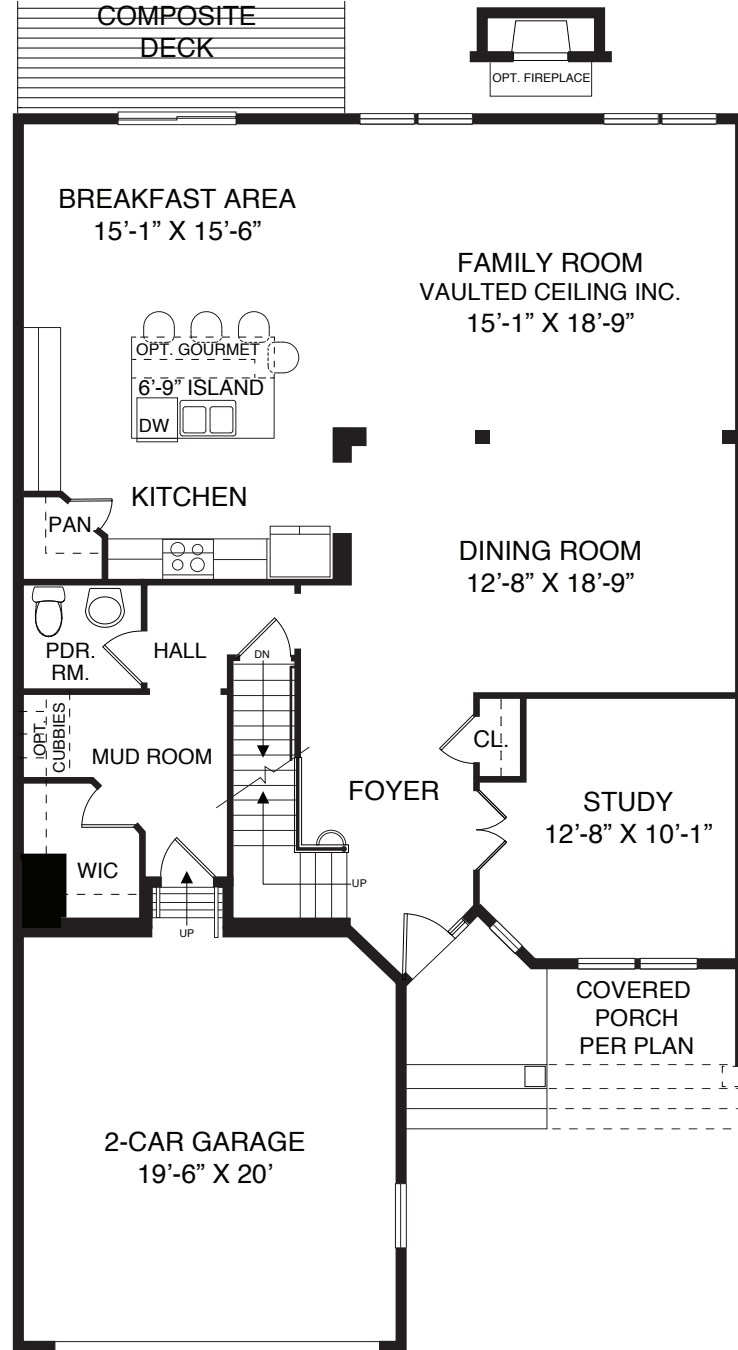


**VENTRY**  
◇ EDMONT PRESERVE ◇

**Luxury Carriage Homes**  
**Located in Edmont, PA**  
**RockwellCustom.com**  
**484.240.4040**

# Halliday Interior Home





**VENTRY**  
◆ EDMONT PRESERVE ◆



Although all illustrations and specifications are believed correct at the time of publication, accuracy cannot be guaranteed. The right is reserved to make changes, without notice or obligation. Windows, doors, ceilings and room sizes may vary depending on the options and elevations selected. Optional items are available at additional cost. Actual square footage will vary based on floor plan configuration and options selection. This brochure is for illustrative purposes only and not part of a legal contract.